

Indian Artifact Auction March 12, 2022

Preview: 8 am Auction Start: 9 am

In-Person Bidding:
3700 Davidsburg Rd, Dover, PA 17315

Online Bidding:
www.proxibid.com/marburgauctions

Shipping is available for online bidders!

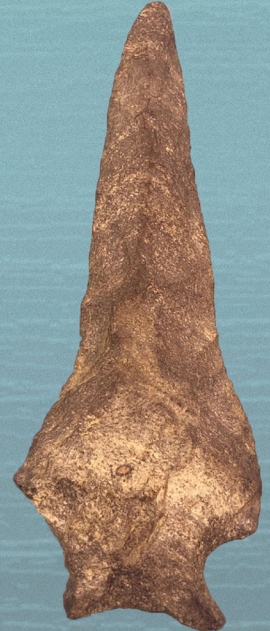
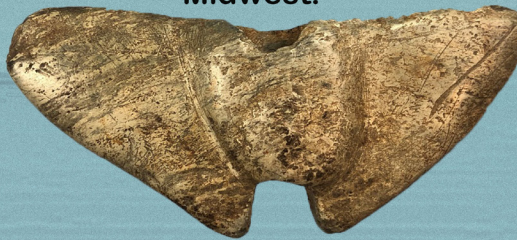
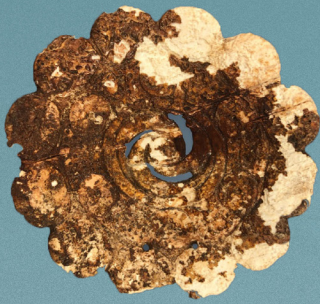
Over 460+ lots of artifacts consigned from across the country including the Northeast and Mid-Atlantic as well as artifacts from the Central States and Midwest.

MarburgAuctions.com

MARBURG
AUCTIONS

(717) 814-8699

info@MarburgAuctions.com



Indian Artifact Auction: Northeast, Central US & Midwestern US

March 12, 2022

9:00am START TIME!

8:00am Preview

This auction consists of a great selection of over 460+ lots of artifacts consigned from across the country including the Northeast and Mid-Atlantic as well as artifacts from the Central States and Midwest. Included is a large selection of quality stone tools, axes, celts, pendants, bannerstones, large frames of arrowheads and large group offerings, Iroquoian artifacts, trade beads, clay pipes, rare knobbed adze, Susquehannock and Iroquois trade artifacts, birdstone, a nice selection of shell artifacts from VA and TN and several civil war/antiques lots. Several artifact book/Indian Artifact Magazine lots are included towards the end of the auction including the rare 1st ever edition of the Indian Artifact Magazine.

The auction will include group lots and individual lots as well as items for beginner collectors and high-end collectors.

There will be in-person bidding as well as live online bidding through Proxibid, absentee and phone bidding.

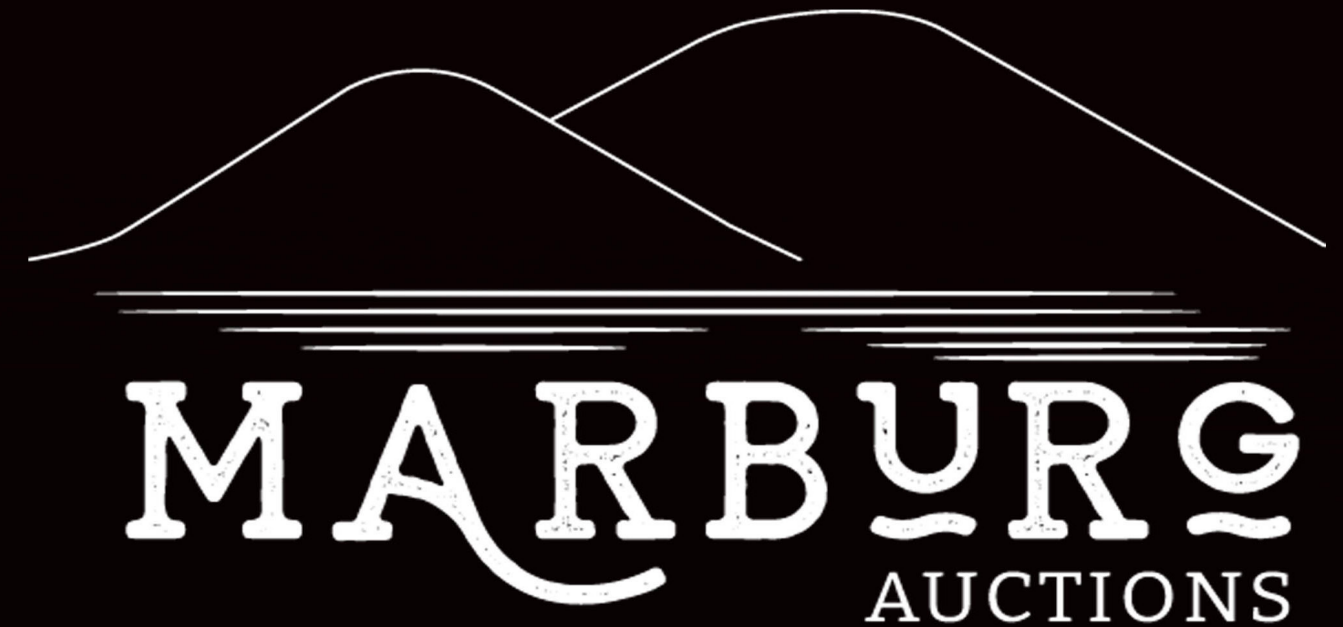
In-Person Bidding:

3700 Davidsburg Road, Dover, PA 17315
13% Buyers Premium, 3% Cash Discount

Online Bidding (Proxibid):

www.proxibid.com/marburgauctions

Direct questions or inquires to: (717) 814-8699
or fill out the contact form for an email response.



Actively accepting consignments for
our 2022 artifact auctions.

1. 4 1/4" Poplar Island Argillite, Bally, PA Berks Co, Ex: Unger, Hallman
2. 8 3/4" Full Groove Axe, York Co., PA
3. Lot of x3 Massachusetts Arrowheads, Fox Creek, Genesee, Sus. Broad
4. Frame of Massachusetts Arrowheads, Longest is 3 5/8" Long
5. Frame of x7 Fine Triangle Points, Dauphin Co., PA, Ex: Rumfelt, Longest 1 7/16"
6. Pair of Archaic Stem Points, Dauphin Co., PA, Ex: Rumfelt, Longest 2 3/4"
7. 4 1/4" Chert Snook Kill Point, Dauphin Co., PA, Ex: Rumfelt
8. 5" Celt/Chisel, Dauphin Co., PA Ex: Rumfelt, Nice Bit
9. HUGE 16 1/4" Roller Pestle, Northampton Co., PA, Ex: Dr. Friermuth of Eason PA
10. Miniature 4 1/4" 3/4 Groove Axe, Fluted, Highly Stylized, Pennsylvania
11. Fine 6" 3/4 Groove Axe, Hardstone, Highly Polished w/Sharp Bit, Pennsylvania
12. Extremely Rare 1917 Moorehead's "Stone Ornaments" Vintage Book
13. Rare 1914 Book "A Study of North Appalachian Indian Pottery" SIGNED by Author in 1916
14. Bannerstone Preform w/Drilling+Nipple, 4" Long, Weise Island Lancaster Co., PA



15. 2 5/16" Fluted Ohio Paleo Clovis Point, Darke Co., Ohio, Heavily Ground Base
16. Rare 2 7/8" Double Cupped Quartz Discoidal, Jersey Co., ILL
17. 4 1/2" Nice Faceted Adze, Michigan Find, Ex: Museum Collection
18. HIGHLIGHT 3 1/6" Colorful Flint Ridge Intrusive Mound Point, Wood Co., Ohio
19. Lot of 5 Tennessee Drills, Punches, Gravers, Tools, Flint, Longest 2"
20. Lot of 9 Tennessee Triangle Points, Madisons, Great Condition, Longest 1 13/16"
21. Strand of Mid to Late 1800's Trade Beads, Found in Alabama, Likely Tuscaloosa
22. RARE Lot of Bone Tools/Pendants/Stone Tools, Found in Dauphin Co., PA Rock Shelter
23. 3 1/2" Pendant w/Drilling Started, New York State Find
24. Lot of x5 Jasper Ovates, Burlington Co., NJ Ex: Dorothy Middleton Collection, Longest 1 5/8"
25. Rare Salvaged Birdstone, 4 3/8" Long, Cooke Co., Tennessee Ex: Fransis Hodse Jr.
26. 4 1/8" Crib Mound Blade, Spencer Co., Indi-



27. Pair of Head-Treated Red Jasper Bifurcates, Berks & Lehigh Co., PA, Longest 1 1/4"
28. Large 2 1/4" Jasper Triangle Point, New Jersey Find along Musconetcong River
29. Nice 4" Chert Genesee Point, New York State Find- Excellent Condition
30. 2 1/2" Heat-Treated Red Jasper Broad Style Point, Lehigh Co., PA
31. 3" Banded Slate Butterfly Bannerstone, Western PA, Salvaged Wing Ex: Kemmerer
32. Pair of Abraiding Stones- Markley Farm, Montgomery Co., PA Ex: Lamar Mumbauer
33. NICE 3/4 Groove Miniature Hardstone Axe, Polished, Lancaster Co., PA
34. 6 1/2" Full Groove Axe, Well-Made, Long Level-York Co., PA
35. 4 7/8" Full Groove Axe, Long Level- York Co., PA
36. Lot of 6 Quartz Triangle Points, Lancaster Co., PA, Longest 1 3/16"
37. Pair of Archaic Stem/Hoover's Island Point, Lancaster Co., PA, Longest 3 3/4" Long
38. 4 3/16" Archaic Stem/Newmanstown Point, Lancaster Co., PA, Thin piece! Argillite
39. Lot of x2 Morrow Mountain Points, Lancaster Co., PA- Argillite



40. THIN 3 5/8" Koens Crispin Argillite Point, Lancaster Co. PA
41. Lot of 14 Jasper Points, Some Heart-Breakers- Pennsylvania Finds
42. 1 1/2" Variegated Brown/Yellow/Blue Jasper Perkiomen, Montgomery Co., PA Ex: Mumbauer, Savidge
43. SUPERB 1 3/4" Yellow Jasper Perkiomen, Carbon Co., PA, Well-Made and THIN Ex: Savidge
44. Lot of 3 Quality Triangles, Pennsylvania Finds, Chalcedony, Pink Quartzite, Chert, Longest 1 9/16"
45. Pair of Quartz Triangle Points, Pennsylvania Find, Ex: Dick Savidge, Longest 1 5/8"
46. 1 5/8" Quartzite Triangle Point w/Pink Streak, New Jersey, Ex: Dick Savidge
47. Lot of x3 Nice Chert Bifurcates, Pennsylvania, Ex: Dick Savidge
48. HIGHLIGHT Rare Shell Gorget, Wythe Co., VA "B. Site", 5 7/8" Wide
49. Pair of Rare Shell Ear Pieces/Plugs, Wythe Co., VA. Longest 5 1/4"
50. 24" Strand of Bone/Shell Tubular Beads, Wythe Co., VA
51. Pair of Trigger Awls, Nice Examples, Wythe Co., VA, Longest measures 6"

- 52. Large Shell Conch Pendant, 5 1/8" Long, Drilled, Wythe Co., VA
- 53. Lot of Bannerstones, x1 Preform, x2 Halves, New York and PA
- 54. RARE Frog Effigy Stone Pipe, New York State, Restoration to Stem
- 55. 7 1/4" x 3" New England Native American Pine Needle Basket. Minor Damage to Rim
- 56. Lot of Mid-Late 1800's and Modern Beads, Sandcast, African Trade, Venitian Trade Beads
- 57. 5 1/8" Full Groove Axe, Long Level- York Co., PA, Nice Condition+Sharp Bit
- 58. 4 5/8" 3/4 Groove Axe, Sits on End, Dauphin Co., PA, Nice Bit
- 59. 5 3/4" Serpentine Bannerstone Preform, Montgomery Co., PA Ex: Mumbauer
- 60. 3 1/4" Drilled Steatite Whale's Tail Bannerstone, High Polish, Long Level York Co., PA
- 61. Large Lot, 100's Various Points, Dorchester Maryland/ Surrounding Counties
- 62. Lot of x10 Stone Tools, Axes, Celts, Pestles. York and Lancaster Counties, PA
- 63. 3 1/8" Jasper Jacks Reef Point, New Jersey Find, THIN Piece
- 64. Pair of Lanceolate Style Points, x1 Fox Creek, Ex: Bowser, Washington Boro Site, PA
- 65. 5 1/2" Hardstone 3/4 Groove Axe, Lehigh Co., PA, Great Condition
- 66. 2 1/4" Miniature Celt, Burlington Co., NJ, Ex:Lee Fisher Collection
- 67. 3" Jasper Mansion Inn, Heavily Patinated, New Jersey, Ex: Ed Stecewicz



51.

65.



59.



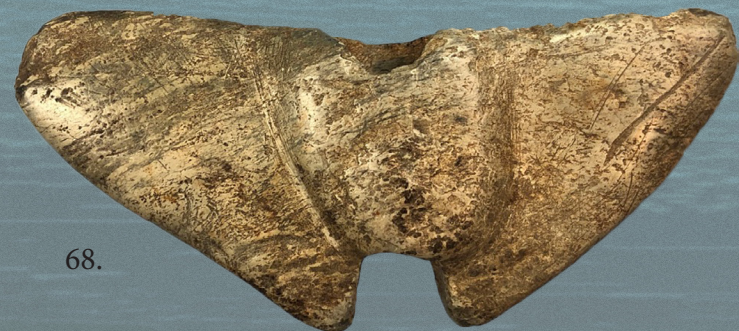
60.



73.



61.



68.

- 68. HIGHLIGHT Rare Whales Tail Bannerstone, Lehigh Co., PA Ex: Bachman, Gaal Collections
- 69. Lot of Jasper+Quartzite Tools, Thumbnail Scrapers, Paleo Scraper, "Dark Moon Farm" Site NJ
- 70. 3 1/2" Quartzite Koens Crispin Point, Berks Co., PA
- 71. Frame of Quartz Points x22, Berks Co., PA Ex: Wessner Collection
- 72. Frame of Triangles, Bone Tools + Animal Teeth, Simmons Site, Erie Co., NY
- 73. RARE 6" Gouge Found in Salem Co., New Jersey, Ex: Robert Funk Sr and Jr.
- 74. Lot of 6 Quartz Triangle Points, Lancaster Co., PA, Longest 1 1/4"
- 75. 3 1/2" Miniature Hardstone Granite Axe, Pennsylvania Find, Perfect Condition
- 76. Massive 7 1/8" Rhyolite Morrow Mountain Point, Lancaster Co., PA Ex:Young
- 77. THIN 4 5/8" Quartzite Knife Blade, Lancaster Co., PA

- Ex: Brieghtner Coll.
- 78. 2 5/8" Argillite Perkiomen, Thin, Berks Co., PA. Ex: Mellinger, Young
- 79. 2 1/2" Rhyolite Susquehanna Broadpoint, Berks Co., PA, Ex: Mellinger, Young
- 80. 1 13/16" Quartzite Paleo Clovis, Fluted, Berks Co., PA Ex: Stecewicz, Amspacher, Young
- 81. 3 7/8" Colorful Quartzite Poplar Island, Chester Co., PA Ex: Denny Moore
- 82. 3 5/16" Rare Quartzite Kirk Corner Notch, Lancaster Co., PA Ex:Robinson, Young
- 83. NICE 4 5/16" Rhyolite Susquehanna Broadpoint, Lancaster Co., PA, Ex: Young
- 84. Lot of 3 Fine Dovetail Points, Lancaster + Berks Counties, Jasper, Chert
- 85. 3 1/4" Jasper Fox Creek Lanceolate, Berks Co., PA, Ex: Mellinger, Young
- 86. 4" Large Triangular Knife Blade, Union Co., PA Ex: Straub, Amspacher, Young
- 87. 2 1/2" Banded Rhyolite Susquehanna Broadpoint, Berks Co., PA Ex: Young
- 88. MASSIVE 7 1/2" Rhyolite Blade, Broken+Reglued, Conodoguinet Creek Mechanicsburg PA Museum
- 89. Pair Large Blades, Morrow Mountains, 5 1/16" Longest, Central PA Finds
- 90. XL 5 13/16" Rhyolite Fox Creek Point, Delaware River S.E. PA, Restoration to 1/8" of Tip
- 91. SUPERB 2 15/16" Chert Jacks Reef Point, Erie Co., PA Ex: Cordero, Young
- 92. HIGHLIGHT Incised 3 1/2" Crescent Bannerstone, Haldeman Island, Dauphin Co., PA
- 93. Large lot of x2 Frames Misc Arrowheads/Artifacts, Halifax PA Area, Ex: Enders
- 94. Huge Lot Tools, Axes, Celts, Preforms, Pottery/Soapstone, Halifax PA Ex: Enders
- 95. 100's of Points, Broken, Field Grade, Preforms, Halifax, PA Ex: Enders
- 96. 100+ Filed Grade Points/Artifacts, Haldeman Island, PA Ex: Enders
- 97. Lot of 5 Axes, 2 Bannerstone Preforms + Net Sinkers, Halifax PA, Ex: Enders
- 98. Lot of 10 Celts/Chisel, Nice Grouping, Halifax PA Finds, Ex: Enders Collection
- 99. Pair of Rare Frederic Remington Bronze Statues, Native American, Large Examples
- 100. Frame of Arrowheads, Yager Farm Site Halifax, PA, NO SHIPPING-LARGE STAND/FRAME
- 101. Large 7 1/8" 3/4" Groove Axe, Talbott/Arundel/Hartford, Maryland Ex: Davis Collection
- 102. RARE 4 3/4" Double Grooved Axe, Sunbury Northumberland Co., PA Ex: Fred Myer Collection
- 103. 4 1/8" Miniature Full Groove Axe, Collection found



83.

85.

90.

92.

- in Berks/Carbon Counties, PA Ex: Hallman
- 104. XL 9 1/8" 3/4 Groove Axe, Talbott/Arundel/Hartford, Maryland Ex: Davis Collection
- 105. 4 1/4" Onondaga Knife Blade, Tonawanda, Erie Co., NY Ex: Don Boyd
- 106. Lot of 4 Fine Onondaga Points, Jacks Reef, Vosburg, Corner Notch, Cattaraugus Co., NY
- 107. x3 Onondaga Drill and Punch Tools, Livingston Co., NY Ex: Don Boyd, Longest 1 3/4"
- 108. x5 Side Notch Points, Onondaga Chert, Cattaraugus Co., NY Ex: Don Boyd, Longest 2 5/16"
- 109. Lot of 5 Genesee/Archaic Stem Points, Tonawanda, Erie Co., NY Ex: Don Boyd, Longest 3 1/8"
- 110. Lot of 5 Transitional Points, Perkiomen, Broads, Drybrooks, Tonawanda, Erie Co., NY Ex: Don Boyd
- 111. Lot of x6 Stem Points, Tonawanda, Erie Co., NY Ex: Don Boyd Longest 2 11/16"
- 112. Lot of x6 Onongaga Points, (1x/Broken/Glued) Tonawanda, Erie Co., NY Ex: Don Boyd

- 113. Lot of x5 Genesee/Archaic Stem Points, Tonawanda, Erie Co., NY Ex: Don Boyd Largest 2 3/4"
- 114. Large 4" Broad Style Blade/Genesee Point, Genesee Co., NY THIN
- 115. Impressive 5 1/8" Black Chert Knife Blade, Possible Paleo Biface, Carbon Co., PA
- 116. RARE 3 5/8" Lamoka Faceted Adze, New York State Ex: Shipley, Davis
- 117. RARE 8" Grooved Adze, EXCELLENT CONDITION Found in Windsor, Ontario Canada.
- 118. 1 7/8" THIN Triangle Point w/Fossil Hole Through Point, Pennsylvania, Ex: Savidge Collection
- 119. Lot of 3 Iroquoian Style Triangle Points, Longest 1 5/16", Lycoming Co., PA Ex: Dick Savidge
- 120. Perfect 1 1/2" Iroquoian Style Triangle Point, Lycoming Co., PA Ex: Dick Savidge
- 121. FINE 1 5/8" Quartzite Triangle Point, Semi Translucent. Pennsylvania, Ex: Dick Savidge
- 122. Impressive Serrated Bifurcate Point, Chert, Pennsylvania, Ex: Dick Savidge
- 123. Pair of FINE Susquehanna Broads, Rhyolite+Black Quartzite, Ely Island, Lancaster PA Ex: Bowser, Savidge
- 124. Pair of Fine Jasper Fishtail/Drybrook Points, Pennsylvania, Ex: Dick Savidge Collection
- 125. Classic 3" Piedmont Northern Variety, Pennsylvania, Ex: Dick Savidge Collection
- 126. Lot of 3 PERFECT "T" Drills, Chert, Northumberland, Lycoming Co., PA, Ex: Dick Savidge
- 127. 3 1/4" Siltstone/Diabase Poplar Island Point, York Co., PA, Ex: Dick Savidge
- 128. Large Frame 70+ Quartzite, Jasper, Chalcedony, Perkiomens, Berks Co., PA Bower Quarry
- 129. 3 5/16" Normanskill Chert Agate Basin Paleo, New York State
- 130. 5" Mansion Inn Blade, Westfield Massachusetts, Hampton Co., MA
- 131. Frame of New York Arrowheads/Artifacts, Longest 3, 32 Total Pieces
- 132. Large 27 1/4" 1860's-1890's Cane Shaft w/ Mesquite Foreshaft, Sinew Wrapped Apache
- 133. 24 1/2 Wood Shaft Arrow, Late 1800's, High Plains Arrow w/Stone Tip, Sinew+Feathers
- 134. 18" Hide-Wrapped + Beaded War Club, 1880's-1890's, Signed on War Club End
- 135. Large 27 1/2" 1860's-1890's Cane Shaft w/ Mesquite Foreshaft, Sinew Wrapped Apache
- 136. 27" Cane Shaft Arrow, Late 1800's Early 1900's, Red/Black Paint, Feathers Attached
- 137. 19" Susquehannock Trade Bead Strand, Polychrome, Chevrons, Washington Boro, Ex: Ron Stoner
- 138. Lot of 6 Quartz Triangle Points, Lancaster Co.,



- PA. Longest 1 1/8"
- 139. 20" Strand Susquehannock Trade Beads, Washington Boro, PA, Ex: Ron Stoner Collection
- 140. Rare Strickler Site Iron Hoe + Bullet Mold, Washington Boro, Lancaster Co., PA. Ex: Heuer, Amspacher
- 141. Rare Strickler Site Iron Hoe, Washington Boro, Lancaster Co., PA. Measures 5 1/8"
- 142. NICE 23" Strand Susquehannock Trade Beads, Polychrome, Chevrons, Washington Boro, PA Ex: Stoner
- 143. x3 Pipe Bowls, Strickler Site- Washington Boro, PA Susquehannock, Ex: Enck, Kemmerer
- 144. Lot of Susquehannock + Iroquoian Artifacts, Beads, Triangles, Brass Bells
- 145. Lot of Owasco Obtuse Angle Pipes (x2 Restored) New York State Finds Ex: Kemmerer
- 146. 2 3/4" Drilled Bannerstone w/Quartz Streak, Lower Susquehanna River, Pennsylvania
- 147. Large Frame of Iroquois Trade Beads, Lower Genesee Valley, Ex: Bowman Collection
- 148. Very Rare Silver Earring/Earbob Pair, c.1750-1820 Iroquoian Trade Artifacts, NY State
- 149. RARE Gun Lock w/Native American Flint + Iroquoian Pottery Shards, New York State
- 150. 5" Hardstone 3/4 Groove Axe, Boyertown, Montgomery Co., PA Ex: Hallman
- 151. 6 7/8" Full Groove Axe, Lancsater Co., PA, Ex: Hallman Collection
- 152. NICE Polished Hardstone 3/4 Groove Axe, Elmira Chemung Co., NY, Ex: Hallman
- 153. Pulled
- 154. RARE 16" Strand Susquehannock Polychrome, Straw Beads, Trade, Washington Boro, PA
- 155. Lot of x4 Fine Quartz Triangle Points, Lancaster Co., PA, Longest 1 1/4"
- 156. Rare 3 1/2" Fluted Northumberland Paleo Point, Chert, New York State
- 157. BEST of BEST 5 1/2" Hardstone Celt, Perfect, Isle of Que, Snyder Co., PA, Ex: Savidge
- 158. Incredible Streaked Bannerstone Preform, Carbon Co., PA Ex: Dick Savidge
- 159. SUPERB 3 1/4" Black Polished Slate Celt, Lewisburg, Union Co., PA Ex: Savidge
- 160. HIGHLIGHT Huge 6 7/8" Ashtabula/Sus Broad Point- Gloucester Co., NJ, 1936, Ex: Savidge
- 161. Superb 4 1/4" Corner Notch Kirk Point, Mid-western Point, Thin+Well Made, Ex: Savidge
- 162. 4 3/4" Archaic Strait Stem, Pettis County, Missouri, Ex: Crawford, Savidge

- 163. 3 3/4 Dickinson Point, Pettis County, Missouri, Ex: Crawford, Savidge
- 164. 4 7/8" Impressive Corner Notch Point/Drill, Mozarkite Chert, Midwest Point, Ex: Savidge
- 165. Pair of Midwestern Stem Points, Longest 3 1/2" Long, Minor Ancient Damage to x1 Base
- 166. Pair of Ohio Points, Intrusive Mound + Serrated, Longest 2 1/4"
- 167. Pair of Hornestone Lost Lake Points, Tennessee, Longest 3 1/8", Minor Nicks
- 168. 3 3/16" Turkey Tail Point, Kentucky, Overall Good Condition, Ft. Payne Chert
- 169. Lot of x4 Midwestern Points, Longest 2 5/8" Long, Sidenotch, Godar
- 170. Pair of Hornestone Kirk Points, Tennessee Longest 3 1/16", Minor Nicks Noted
- 171. Pair of Buck Creek Points, Kentucky, Longest 3 3/8" Long- Nice Condition!
- 172. Pair of Copena Blades, Tennessee, Longest 3 3/16", Dover Chert, Sonora
- 173. Pair of Corner Notch Points, Midwestern States, Longest 2"
- 174. 4 3/16" Chert Archaic Stem Point, Midwestern Point
- 175. Woven Perishable Material- Foundin Rock Shelter Crossville, Tennessee, C.1100-1600AD
- 176. RARE 3 1/4" Spiral Rattlesnake Gorget, Tennessee, Ex: Cliff Jackson
- 177. Lot of 25 Canine Drilled Animal Teeth, Green River, KY Ex: Art Gerber Collection
- 178. Lot of Antler Points, Kentucky Finds, Longest Piece Measures 2 5/8"
- 179. Frame of 51 Various Artifacts, Points, Beads, RARE Artifacts, Wythe Co., VA
- 180. Superb 18" Strand of Shell Beads, Wythe Co., VA, Long Tubular + Barrel Styles
- 181. Lot of Trigger Awls + Bone Patellar Game Pieces, Wythe Co., VA
- 182. RARE Lot of Awls and Bone Tools, Wythe Co., VA, Longest Measures 5"
- 183. Rare Shell Mask, Weeping Eye, Engraved, Hiwassee Island Site, Meigs Co., TN, 4 7/8"
- 184. Nice Lot of Soapstone Vessel Shards/Salvaged Pendants, Hiwassee Island Site, Meigs Co., TN
- 185. NICE 23" Strand of Shell Beads, Wythe Co., VA, Long Tubular and Barrel Styles
- 186. Large 4 5/8" Quartzite Savannah River Point, Eastern Tennessee, Great Condition!
- 187. 3 3/4" Socketed Bone Hook/Point, Found in Washington Co., Tennessee
- 188. 2 3/8" Quartzite Late Paleo Point, Virginia, Ex:



- Ed Bottoms Collection
- 189. Lot of 7 Quartz, Quartzite and Rhyolite Points, Found in Virginia
- 190. Very Large 7 3/8" Drilled Awl/Pendant, Rib Bone, Wythe Co., VA
- 191. Pair of Quality Guilford Points +Blade, Jasper + Quartz, Virginia, Longest 3 7/16"
- 192. Impressive Rhyoltie Stanley Halfed Scraper, 1 15/16" Long, Virginia
- 193. Large 4 7/8" Archaic Stem Point, Mid-Atlantic Region, Broken and Reglued
- 194. 2 1/2" Quartzite Fluted Paleo Point, Virginia, Ex: Ed Bottoms Collection
- 195. HIGHLIGHT 5 1/2" Double Grooved Axe, Pottstown, Berks Co., PA Ex: Sheffey, Hallman
- 196. 4 1/2" Granite 3/4 Groove Hardstone Axe, Maxatawny Creek, Berks Co., PA Ex: Hallman
- 197. Huge 8 1/2" Axe, Full Groove w/Raised Ridges on sides, York County, PA Ex: Hallman
- 198. Double Cupped Quartz Discoidal, 2 1/2" in Diameter, Midwestern Find
- 199. Lot of 40 Points/Arrowheads, Midwest and Central States, Longest 3 3/4"
- 200. Lot of 45+ Points/Arrowheads, Midwest and Central States, Longest 3 3/4"
- 201. Lot of Misc Arrowheads, Tools, Triangles, Pendant, Longest 3 3/4", Portland, PA
- 202. Lot of x8 Fox Creek Lanceolate Style Points, Longest 3 5/8" PA+NJ
- 203. Lot of 30 Triangle Points, Lancaster Co., PA, Quartz, Chert, Quartzite, Longest 1 3/16"
- 204. RARE 2-Hole Shell Gorget, Wythe Co., VA, Broken+ Reglued Measures 4 7/8"
- 205. Lot of 37 Triangle Points, Lancaster Co., PA, Quartz, Chert, Quartzite, Longest 1 1/4"
- 206. 8" Strand Ssuquehannock Trade Beads, Washington Boro, Lancaster PA, Straws, Licorice
- 207. NO SHIPPING- 5 Gallon Bucket, Full Fossils 100's Shark Teeth, Found at Blind Pass Beach, Sanibel Island, Florida 2003 Enders
- 208. Pair of Pipes, x1 Banded Slate Pipe, x1 Pipestone Tube Pipe End, Western PA
- 209. 16" Strand Susquehannock Trade Beads, Washington Boro, PA, Licorice, Straws
- 210. SUPERB 22" Strand, LONG Straws, Polychromes Susquehannock Trade Beads, Washington Boro, PA
- 211. Description Change: Large 25" Strand, Red Straws, Seed Beads, Blue Rounds, Reported Trade Beads Found in Washington Boro, Lancaster Co., PA + Modern Beads
- 212. 3 7/8" Early Archaic Point, Black Chert, New York State, Anciently Snapped Base



214.



215.



217.



- 213. 3 3/4" Boats Blade, Normanskill Chert Knife, New York State
- 214. Impressive 2 15/16" Normanskill Point, New York State, THIN
- 215. 2 7/8" Normanskill Chert Corner Notch Kirk, New York State
- 216. Lot of 7 New York State Points, Longest 3 5/8"
- 217. Pair of Fine Jasper Points, Drybrook + Corner Notch, Pennsylvania, Longest 2 1/2"
- 218. Lot of 10 Various Points found along the Delaware River in Pennsylvania
- 219. x3 Tock Island Quartz Points--Neversink, Sullivan Co., NY-- Longest 2 1/2"
- 220. THIN 3 7/8" Argillite Morrow Mountain Point, Pennsylvania
- 221. 9" Strickler Site Tulip Bowl Pipe, Washington Boro, (restoration) +Bead Strand, Jangler
- 222. Massive 8 1/2" Full Groove Axe, Pennsylvania, Polished Axe, 5 1/2" Wide
- 223. Perfect 8 1/4" Full Groove Axe, Polished + Sharp Bit, Pennsylvania
- 224. Quartz Bell Pestle 3 3/4" Tall, Knobed at Top, Pennsylvania
- 225. Miniature 4 1/4" Polsiehd 3/4 Groove Axe, Nice Bit, Pennsylvania
- 226. Lot x3 Artifacts: 10" Celt, Pendant, Effigy, Pennsylvania Finds
- 227. RARE 7" Ring Bowl Iroquois Pipe, Ontario Co., NY
- 228. Artifact Lot, Paint Pot, Brass Jangler, Polished Pipestone Piece, Pennsylvania Finds
- 229. Lot of x3 Bifurcate Points, Heldeburg Chert, Pennsylvania Finds, Longest 1 5/8", Ex: Savidge
- 230. 2 1/8" Yellow Jasper Perkiomen Point, Pennsylvania Find, Ex: Savidge Collection
- 231. Stunning 1 3/8" Chert Warratan/Bifurcate Point, Pennsylvania Find, Ex: Savidge Collection
- 232. Lot of x3 Fine Transitional Points, Dybrook Susquehanna, Pennsylvania, Ex: Savidge
- 233. 1 9/16" Chert Triangle Point, Pennsylvania, Ex: Savidge Collection
- 234. 1 5/8" Quartzite Triangle Point, Pennsylvania, Ex: Savidge Collection
- 235. FINE 2 5/8" Onondaga Chert "T Drill", Mertz Farm, Northumberland Co., PA, Ex: Savidge
- 236. Stunning 3 9/16" Poplar Island Point, Found on Isle of Que, Syder Co., PA Ex: Savidge
- 237. RARE 2 9/16" Paddle Drill, Quartzite, Pennsylvania, Ex: Savidge Collection
- 238. 3 1/4" Clay Pipe, Broken+Reglued Bowl, From the Mickey Taylor Collection of NY

220.



230.



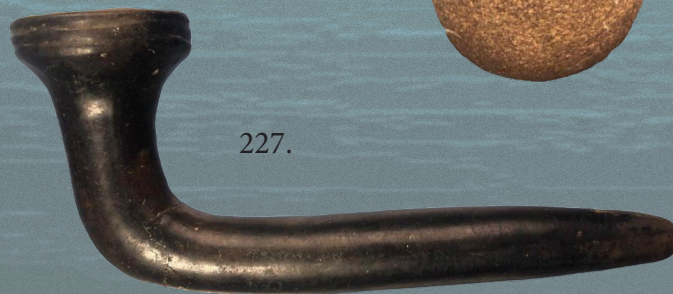
225.



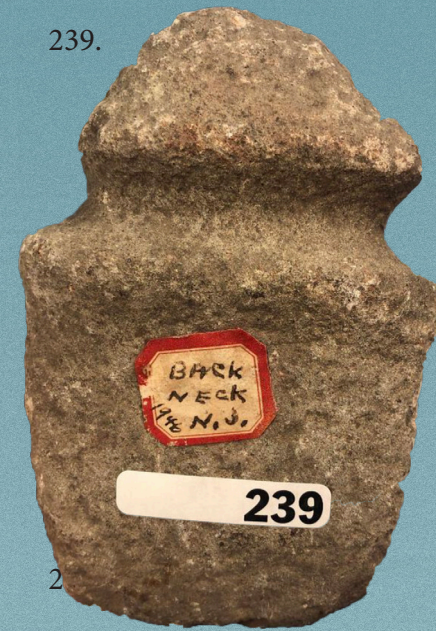
235.



227.



239.



240.



240.

240.

260.



258.



242.



241.



- 239. 6 1/4" Trophy Style Axe, Found in Back Neck, NJ 1946, Rasied Ridges
- 240. 5 9/16" Jasper Paleo/Late Archaic Lanceolate Knife, Philadelphia, PA Ex: Harry Jones
- 241. HIGHLIGHT Best of Best 4" Serpentine Shiled Bannerstone, Lancaster Co., PA, Incised
- 242. Faceted Lamoke Adze, 3 5/16" Top Quality, New York State, Excellent Condition
- 243. 3 5/16" Flaked Hoe/Scraper Tool, Harrisburg PA Find, Ex: Young
- 244. Pair of Rhyolite Points, Lehigh Broad Point, Longest 3 3/4", James Young Collection
- 245. XL 5 3/4" Quartzite Morrow Mountain Blade, Central PA, Ex: Young Collection
- 246. Old Native American Child Painting on Canvas, Artist "Rider", Small Painting 10"
- 247. Snow+River Scene, Vintage Painting on Canvas, Artist "Reemes" Small Painting, 12"
- 248. Lot of Antiques- Silver Handled Vessel, Stine, Carved Wooden Folk Art, Nutcracker
- 249. XL 17" Owasco Pottery Vessel, Eastern NY Pottery Style, Heavily Restored NO SHIPPING
- 250. Large of Large Pestles, Longest is 14", Halifax PA, Ex: Enders Collection
- 251. Large Box Lot Field Grade Points/Broken, Poffen Berger Site Halifax PA 1956, Ex: Enders
- 252. Lot of various Pre-Columbian, Meso-American Artifacts, Beads, Stone Pieces, Several contemporary.
- 253. Lot of Japsr Preforms, Bower Quarry Site, Ex: Hallman
- 254. Lot of x5 Old Books, 1942 "Indian Relics & Values", "Susquehanna's Indians", Kent, Wallace
- 255. Lot of Old Books, Non-Artifact Related, Uncle Tom's Cabin and more.
- 256. Lot of 6 Quartzite Blades, Points, Berks Co., PA Ex: Flannigan Collection, Longest 3"
- 257. Colorful 2 15/16" Red+White Quartzite Poplar Island, Berks Co., PA
- 258. Pair of Jasper Perkiomen + Lehigh Broad Points, Berks Co., PA Ex: Young
- 259. RARE 4" Chalcedony Bare Island/Archaic Stem, SE PA/NJ, Ex: Walter Glowacki
- 260. 3 5/8" Quartzite Perkiomen/Broad Style Point, Berks Co., PA
- 261. Civil War Book, "The Seventy-Seventh Pennnsylvania at Shiloh" 1908 Second Edition
- 262. Rare Civil War Books "Pennsylvania at Gettysburg, Ceremonies, Dedication of the Monuments" 1893 Vol 1+2
- 263. Rare 1862 Ledger, Company "A" of the 172nd

Regiment Pennsylvania Militia

- 264. Large 17" Book, 1908 "Battles and Commanders of the Civil War" PICTURES/ILLUSTRATIONS
- 265. Print "When Horseflesh Comes High" By C.M. Russell, 1970's Print, 43" Wide!
- 266. Native American Painting on Canvas, 28" x 24", Artist Sr. Bogard
- 267. Civil War Print, "Soul of the Lion" # 444/600, Joe Umble, Large 35" x 29"
- 268. Native American Talking Stick, Beaded w/ Feathers, Ex: Brad Selinger Collection
- 269. Vintage Gello Cantine + Brass Horn, Marked
- 270. Cannonballs, Bullets, Battle of Gettysburg Artifacts, Found by Enders 1944 Next to Eisenhower's Farm
- 271. 1864 Stamps + Penn Township Bank Check, Philadelphia, PA
- 272. Civil War, Soldiers Memorial, Company "A" of 210 Regiment PA, Published 1864 w/Original Wood Frame
- 273. Civil War 1985 Officer's Pay Voucher, Lt. John Jameson + Private Soldier Elias Mercer, Colored non-soldier
- 274. Large lot of Various Tools, Indian Artifacts, Halifax PA Ex: Enders
- 275. Large Lot of 20 Nice Triangle Points, Otsego Co., NY, Largest 1 3/4"
- 276. Paper Thin 3 1/2" Meadowood Blade, Onondaga Chert, NY State, Ex: Taylor Collection
- 277. Superb Lot of 6 Fine Triangles, Onondaga+Chert, New York State, Longest 1 15/16"
- 278. BEST of BEST 4 9/16" Mansion Inn Waterton Variety, Normanksill Chert, Bradford Co., PA
- 279. x6 Red Heat-Treated Jasper Points, Berks Co., PA, Longest 2 3/16"
- 280. 3 3/16" Meadowood Drill/Resharpended Point, Lehigh Co., PA, THIN
- 281. 4" Quartzite Poplar Island Point, Lancaster Co., PA, Ex: Enck Collection
- 282. Lot of x5 Nice Quartzite Points, Archaic, Lancaster Co., PA Ex: Enck, Longest 3 1/4"
- 283. Lot of x12 Quartzite/Chert/Argillite Points, Lancaster Co. PA Ex: Enck, Longest 4 1/4"
- 284. Lot x12 Arrowheads, Trivilpiece Collection, Columbia/Luzerne Co., PA, Longest 2 5/8"
- 285. Lot of 6 Arrowheads, Archaic Stem Points, Trivilpiece, Columbia/Luzerne Co., PA, Longest 3 1/4"
- 286. x3 Fine Points, Bifurcate, Corner Notch, Trivilpiece, Columbia/Luzerne Co., PA,
- 287. Frame of 17 Rhyolite Points, Nice Condition, Lancaster Co., PA Ex: Sam Gunoy, Longest 2 5/8"



- 288. INCREDIBLE 6 7/8" Polished Hardstone Axe, Berks Co., PA, Sharp Bit, Sits on End!
- 289. SUPERB 7 3/4" Raised Ridge Full Groove Axe, Found in Merrimack, New Hampshire
- 290. 5 3/4" Axe, 3/4 Grooved, Oley, Berks County PA, Ex: Jim Bower Collection, Hardstone
- 291. Nice 5" Full Groove Axe, Well Formed, Kutztown, Berks Co., PA Ex: Hallman
- 292. Miniature 3 1/2" Full Groove Axe, Found in Perkasio, Bucks Co., PA
- 293. XL 5 5/8" Benton Point Arrowhead, Found in Tennessee, Curved/Anciently Resharpended
- 294. Pair of Archaic Stem Points, Found in Sumner Co., Tennessee, Longest 3", Ft. Payne
- 295. SUPERB 2 1/2" Corner Notch Kirk, Ft. Payne Chert, Found in Stewart Co., Tennessee
- 296. Pair of Nice Turkeytail Points, Found in Montgomery Co., Tennessee, THIN, Longest 2 1/2"
- 297. Well-Made Paleo Agate Basin, 3 1/2" Long, Central States Piece
- 298. Thin Basal Notched Chert Point, 2 1/4" Long, Found in Kentucky
- 299. Pair of Fine Points, Archaic Stem + Copena Blade, Found in Tennessee, Longest 2 3/8"
- 300. 4 1/4" Banded Slate Winged Bannerstone, Found in Windham, Portage Co., Ohio
- 301. Pair of Rare Hematite Celts, Knox Co., Ohio, Ex: Gene Decario, Longest 1 5/8"
- 302. Lot fo 10 Central States Arrowheads, Longest Point Measures 2 7/8"
- 303. Impressive 4 1/2" Beveled Cobbs Blade, Found in St. Louis Co., Missouri
- 304. Ft. Ancient Blade and Large Flint Blade, Ohio Region, Longest 4 1/2"
- 305. WOW Rare Obtuse Angle Block Pipe, Stone, Engraved, Found in St. Louis Co., MO
- 306. Animal Effigy Mississippian Pottery Vessel, Missing Effigy Head, Central US Find
- 307. Superb Animal Effigy Pipe, Pipestone Found in Williams Co., Ohio. Ex: Hoage Collection
- 308. 4 1/4" Clay Pipe, Broken+Reglued End, From the Mickey Taylor Collection of NY
- 309. 4 1/2" Clay Platform Pipe, Shell Tempered, From the Mickey Taylor Collection of NY
- 310. 4 1/4" Clay Bird Effigy Pipe, From the Mickey Taylor Collection of NY, Minor Restoration at rim
- 311. Huge 6 1/16" Stanfield Knife, Dwain Rogers COA,
- 312. 3" Red/Purple Banded Slate Bannerstone, Fully Drilled, Pennsylvania, Ex: Rich Johnston
- 313. 1 15/16" Brown Jasper Perkiomen, Montgomery Co., PA Ex:Mumbauer, Savidge

- 314. Lot of 3 Bifurcate Points, Pennsylvania, Ex: Savidge Collection, Longest 1 5/8"
- 315. 1 9/16" Variegated Jasper Perkiomen, Pennsylvania, Streaking Material, Ex: Savidge
- 316. 3 1/4" Archaic Stem Bare Island Point, Found in Pennsylvania, Ex: Savidge
- 317. 2 1/4" Superb Meadowood Drill, Onondaga Chert, Duboistown, Lycoming Co., PA Ex: Savidge
- 318. Jasper Perkiomen + Meadowood, Found in Pennsylvania, Ex: Savidge, Longest 1 15/16"
- 319. Pair of Fine Drills, Rhyolite+Chert, Lycoming³⁰⁰ County, PA, Ex: Savidge, Longest 2 3/4"
- 320. 3 1/8" Argillite Bare Island Point, Found in Pennsylvania, Ex: Savidge Collection
- 321. Rare 4 7/8" Lamoka Faceted Adze, Found in Nelson, Madison Co., New York. Perfect Condition
- 322. 4 1/4" Hardstone Adze, Found in Union Co., PA, Great Condition! Ex: Savidge
- 323. 2 3/8" "T Drill", Onondaga Chert, Found by Joe Quinnlin in Elmira NY, Ex: Savidge
- 324. SUPERB 6" Tube Pipe, Fully Drilled, Found in Ohio, Ex: A.T. Wherele, Geheringer, Hilbert Collections
- 325. Rare Steatite Platform Pipe, Found in Bainbridge, Ostego Co., NY, Restored Bowl + Back of pipe
- 326. HIGHLIGHT Best of Best 6 3/8" Chlorite Wingnut Bannerstone, Found in Bedford Co., PA



- 327. 6 3/4" Polished Celt, Large Example, Talbott/Anne Arundel/Harford Maryland Find
- 328. 5 Cohansy + 3 Jasper Triangle Points, NICE PIECES, Ex: Dr. Roland Ellis, Port Elizabeth, NJ
- 329. Lot of x6 Tennessee Triangle Points, Greene County, Longest 1 1/4"
- 330. XL 6 1/2" Archaic Stem Point, Burlington Chert, Madison Co., ILL. Pictured Indian Artifacts of Midwest Book 5
- 331. HISTORICAL 4 7/8" Salvaged Winged Bannerstone, Found 1886 Washington Co., PA, ENGRAVED History
- 332. 2" Variegated Jasper Perkiomen Arrowhead, Found in Pennsylvania, Restored Tip
- 333. Large 10" Full Groove Axe, Found in Pennsylvania, Purchased at an old Roan Auction
- 334. Lot of 4 Larger Argillite Arrowhead, Lancaster Co., PA, Longest Measures 3 5/8"
- 335. HIGHLIGHT 3 1/16" Variegated Jasper St. Charles Dovetail Arrowhead, Piney Island, Lancaster Co. PA
- 336. Pair of Large Argillite Archaic Stem Arrowheads, Lancaster, Dauphin Co., PA, Longest 3 7/8"
- 337. Lot of x3 Flintridge Arrowheads Found in Ohio, Colorful Piny/Gray/Yellow, Longest 2 3/4"
- 338. x5 Rhyolite Piedmont/Stem Arrowheads, Lower Susquehanna River Valley PA, Longest 2 1/16"
- 339. Lot of 4 Archaic Stem Arrowheads, Lower Susquehanna River Valley PA, Longest 3 3/8"
- 340. 2 Fox Creeks, 2 Quartzite Arrowheads, Lower Susquehanna River Valley, PA, Longest 3 1/4"
- 341. Lot of 4 Archaic Stem Bare Island Arrowheads, Lower Sus. River Valley, PA, Longest 3 5/8"
- 342. Lot of 7 Fine Smaller Arrowheads, Corner Notch, Bifurcate, Lower Sus. River, PA, Longest 2 9/16"
- 343. 2 3/16" Chert Jacks Reef Point, Safe Harbor Dam Area, Pennsylvania, THIN
- 344. 2" Onondaga Dovetail/Corner Notch Kirk, Bainbridge, PA, Ex: Doc Bowser Collection
- 345. THIN 2 1/4" Jacks Reef Pentagonal Point, Lower Susquehanna River, PA
- 346. Perfect 3 1/2" Siltstone/Diabase Piney Island Point, Lower Sus. River, PA
- 347. Lot of 4 Larger Bare Island Archaic Stem Points, Lower Sus. River, PA, Longest 3 1/2"
- 348. Lot of 3 Larger Piney Island Archaic Stem Arrowheads, Lower Sus. River PA Longest 3 5/8"
- 349. NICE 5 1/2" Full Groove Axe, Burlington Co., NJ, Ex: Dorothy Middleton, Hallman
- 350. XL 9" Full Groove Axe, Lancaster Co., PA, Ex: Hallman
- 351. RARE Porphoritic Full Groove Axe, Sping City, Chester Co., PA, Polished, Nice Bit!
- 352. 6 7/8" 3/4 Groove Axe, Found in N. Maryland/



- Southern PA, Ex: Davis, Loue, Hallman
- 353. Beautiful 6 1/2" Polished 3/4 Groove Axe, SITS ON END, Lower Lancaster Co., PA
- 354. 2 7/8" Black Chert Paddle Drill, Allegany Co., New York, Ex: Miller Collection, Well made!
- 355. Lot of 13 Onondaga Chert Points, Perkiomens, Meadowood, Livingston Co., NY, Ex: Ruster
- 356. Rare Late 1800's Plains Native American Arrows + Beaded Hide Bag, x8 Arrows! Mounted
- 357. Superb 4" Megalodon Shark Tooth- Found at Blind Pass Beach, Sanibel Island, Florida in 2003
- 358. Nice 2 7/8" Megalodon Shark Tooth- Found at Blind Pass Beach, Sanibel Island, Florida in 2003
- 359. Perfect 3 5/8" Megalodon Shark Tooth-Serrated- Found at Blind Pass Beach, Sanibel Island, Florida
- 360. Lot of x3 Megalodon Shark Teeth, Found at Blind Pass Beach, Sanibel Island, Florida
- 361. Grooved Maul, Found in Ohio, Full Groove Hardstone, 4 1/4" Long
- 362. Pair of Highly Polished Celts Found in Pennsylvania, Great condition, Longest 5 1/2"
- 363. Frame of 40+ Arrowheads, Indian Artifacts Found in Pennsylvania, Longest 3 1/4"
- 364. Frame of Nice Tennessee Arrowheads, Longest 3 5/8"
- 365. Lot of 3 Heart-Breakers, Tennessee, Dalton, Serrated Kirk, Fluted Paleo, Longest 3 1/16"
- 366. Frame of Misc Tennessee Arrowheads, Artifacts, Longest 2 5/8"
- 367. Frame of Central States Arrowheads, Hafted Scrapers and More, Longest 2 3/4"
- 368. Large Lot of Various Arrowheads and Indian Artifacts, Northern Maryland (Frederick Carrol Counties)
- 369. SUPERB 4 5/8" Full Groove Axe, Frederick Co., MD, w/Quartz Worm Tracks, Found by Mr. D. Stover
- 370. 5 3/4" Full Groove Axe, Carrol County, Maryland, Found by Mr. D. Stover
- 371. Lot of x2 Axes + 7" Quartzite Preform, Carrol County + Baltimore County Maryland, Found by D. Stover
- 372. x4 Megalodon Shark Teeth, Monacacy River, MD, Found on Native Sites
- 373. x4 Megalodon Shark Teeth, Monacacy River, MD, Found on Native Sites
- 374. x3 Megalodon Shark Teeth, Monacacy River,

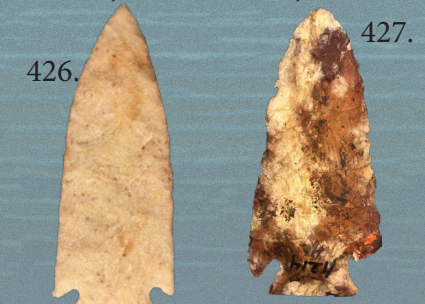
- MD, Found on Native Sites
375. Pottery Shards, 20" Bead Strand, Monacacy River, MD Finds
376. HIGHLIGHT XL 4 3/4" THIN Archaic Strait Stem Piedmont Point, Perfect Piece, Dauphin Co., PA
377. Lot of 7 Points, Dauphin Co., PA and Cape Cod, MA, Longest 3 1/16"
378. Lot of 11 Smaller Points Arrowheads, Dauphin Co. PA Ex: Rumfelt
379. Lot of 2 Bare Island Points and Drill, Longest 3 13/16" Long, Ex: Rumfelt
380. Lot of 7 Archaic Stem and Bare Island Points, Longest 2 5/8" Long, Ex: Rumfelt
381. HUGE 6" Danish Flint Knife Blade, Ex: Robert Leroy Collection, Thin and Well Made!
382. Superb Drilled Danish Battle Axe, Found in Denmark, 6 1/4" Long, Very Fine Example, Polished
383. Pair of FINE Chert Triangles, Found in Pennsylvania, Longest 1 5/8", Thin, Ex: Savidge
384. Chalcedony + Speckled Chert Triangle Points, Found in Pennsylvania, Longest 1 1/2", Ex: Savidge
385. HIGHLIGHT 8 5/8" Knobbed Adze, Found in Maine, Broken+Reglued Artifact
386. Lot of Trade Beads, Found in New York State, Various Ages 1800's-1900's, Tavern Clay Pipe Found in Gettysburg PA
387. Highly Polished Minature 2 1/2" Greenstone Celt, Delaware Co., PA, Great Piece
388. SUPERB 3 5/16" Jasper Meadowood, THIN Point, New Jersey, Ex: Pennypacker Collection
389. Large 3 5/8" Jasper Perkiomen Point, New Jersey, Ex: Pennypacker Collection
390. Nice THIN 2 3/4" Jasper Fishtail, New Jersey, Ex: Pennypacker Collection
391. RARE 3 1/8" Blue Chalcedony Orient Fishtail New Jersey, Ex: Pennypacker Collection
392. Lot of x3 Fine Jasper Transitional Points, Fishtail, Susquehannas, New Jersey, Ex: Pennypacker Collection
393. Pair of Jasper Points, Jacks Reef + Kirk New Jersey, Ex: Pennypacker Collection
394. Lot of 10 Jasper Triangles, New Jersey, Ex: Pennypacker Collection Longest 1 5/8"
395. Lot of 6 Jasper Arrowheads, Blades, Points, Ex: Pennypacker Collection Longest 3"
396. Lot of 8 Nice Jasper Triangle Arrowheads, Ex: Pennypacker Collection Longest 2 5/16"
397. Lot of 40 Misc Arrowheads, Blades, Most found in Pennsylvania, Longest 3 1/2", (1 point is restored)
398. Lot of 12 Misc Indian Artifacts, Pendant, Paint Pots, Signal Cannon Shot, Bannerstone Half, PA

399. Fine 1 3/4" Chert Triangle Point, Found in Pennsylvania Ex: Savidge
400. Fine 1 9/16" Chert Triangle Point, Found in Pennsylvania Ex: Savidge
401. Lot of x3 Tools, Hafted Scraper, Paleo Knives Jasper, York Co., PA, Saginaw
402. Great Selection of 65+ Arrowheads, Blades, Lower Susquehanna River Valley, PA
403. Rare 1930 Book, "Archaeology of Delaware River Valley" Max Schrabisch, Vol 1
404. Lot of 9 Points, Quartz, Quartzite, Jasper, Chalcedony, Berks Co., PA Longest 1 3/8"
405. XL 2 3/4" Variegated Jasper Triangle + Red Jasper Triangle, Lancaster, Berks Counties
406. Superb 3 1/8" Jasper Archaic Stem Point, Found in Pennsylvania, Ex: Seltman Coll.
407. Large 3 1/8" Jasper Corner Notch, Peach Bottom York Co., PA, Ex: Sonny DeLong
408. 3 3/4" Esopus Chert Genesee Point, Lehigh Co., PA, Ex: Dick Cacciola Collection
409. Miniature 2 15/16" Celt + 3/4 Groove Axe, Found in Berks County, PA
410. Perfect 6" Celt, Polished, Found in Watstown, Northumberland Co., PA, Ex: Martin, Hyman, Herbert
411. Onondaga Chert Blade, 3 1/4" Long, NY/PA, Very Well Made!
412. 1/2 Restored 4 1/2" Shield Bannerstone "Long Brow Pl. S.C.", Ex: Hallman
413. 1/2 Restored 3 5/8" Wingnut Bannerstone, Peach Borrom Slate, Northhampton Co., PA, Ex: Hallman
414. End of 1 Wing Restored, Winged Bannerstone, Berks/Lehigh Co., PA Ex: Hallman
415. RARE 5" Missouri Keokuk Axe, Benton Co., MO, Great Condition, Sharp Bit, Sits On End
416. SUPERB 4" Midwest Keokuk Axe, Granite Hardstone 3/4 Groove, Sits on End!
417. NICE 8 3/4" Full Groove Axe, Found in



- Southeast Pennsylvania, Great Bit
418. HUGE 8 1/2" Banded Slate Axe, Found in Ohio, 3/4 Groove Variety, Nicks Noted
419. 4 7/8" Poll Axe Full Groove w/ Raised Ridges, Found in Pennsylvania, Polished
420. XL 13 1/2" Roller Pestle, Lancaster Co., PA Ot-toraro Creek on Horseshoe Bend
421. RARE Double Sided Mortar and Pestle Set, 8" Diameter, Found in Pennsylvania
422. Shallow Soapstone Vessel, Bare Island, Lancaster Co., PA, 14" Wide, NO SHIPPING
423. 3 1/4" Arkansas Caddo Pottery Vessel, Partial Restoration Present
424. 5" x 4 1/2" Arkansas Pottery Vessel, Broken+-Reguled, Punctuate Designs
425. Soapstone Vessels, Lug Handles, PA Pottery Sack Pot, Anasazi Shards
426. HIGHLIGHT Stunning 4 1/8" Quartzite Corner Notch Kirk, Virginia, Paper Thin!
427. SUPERB 3 1/4" Jasper Corner Notch Kirk/Lost Lake Allegheny Co., NY, Ex: Howdy Lang
428. Lot of Iroquois Pipe Fragments (PA/NY) , Tavern Pipe Collection + Gunflints
429. Collection of Heartbreakers, Clovis, Tools, Perkiomens, Pennsylvania, Indiana (VERY LARGE CLOVIS BASE!)
430. 4 Boxes of Shelly's Island, PA Arrowheads, Indian Artifacts, Field Grade, Broken+Complete
431. Soapstone Bowl/Vessel Section w/Lug, Pieces, Lancaster Co., PA- Purchased 9/3/2004 Wise Auction
432. HIGHLIGHT Frame of 3 Mansion Inn Points + Pendant, Rhyolite+Argillite, Quarryville, PA
433. Indian Artifact Magazines- Full Sets 1987, 88, 89, 90
434. Indian Artifact Magazines- Most Full Sets 1991, 92, 93, 94, 95
435. Indian Artifact Magazines- NOT Full Sets 1996, 97, 98
436. Indian Artifact Magazines- NOT Full Sets 1999, 2000, 01, 02, 03
437. HIGHLIGHT Rare First Edition Indian Artifact Magazine, Volume 1-1 June 1982
438. Large Lot of Various Arrowheads, Indian Artifacts, NJ, PA, Specific Locales on Each Box
439. Box Lot of Artifacts, Arrowheads Celts/Tools, Salem County, NJ
440. Lot of Trade Artifacts, Contact Period, Strickler Site, PA + Miller Field Site NJ
441. Miller Field Site, NY Lot of Poetterry Rim/Body Pieces, Nice selection
442. Inuit Alaskan Socketed Spear Tip, Bone/Iv. Tip,

- RARE Longest 2"
443. Grooved Stone Plummet , Pennsylvania, 2 1/2" Long, Very Well Made
444. SUPERB 5 3/8" 3/4 Groove Stone Axe, Excellent Condition, Pennsylvania
445. XL 15" Roller Pestle, Found on "Denver Road, Quarryville PA" By "Emma"
446. Lot of 6 Nice Groove Axes, Lower Susquehanna River, Pennsylvania, Longest 5 3/4"
447. Box Lot of 100's Arrowheads, Indian Artifacts, Broken, Field Grade, Pottery Pieces, Pennsylvania.
448. Lot of Old Barn Auction Catalogs, Allard Auction Catalogs
449. Lot of Various Native American Books, 1923 Ohio Archaeological Quarterly 1961 Eva An Achaic Site, Tennesese
450. Lot of Older+rarer Field Reports, Northeast, Susquehannock
451. Lot of 17 Various Points, Central+Western US, Semi-Translucent Pieces, Longest 3 1/8"
452. Lot of Neolithic Stone Celts, Longest 1 3/4".
453. Very Large Lot Neolithic Saharan Stone Points, 75+, Longest 2 3/8"
454. Lot of 11 Megalodons, Found by Titus Enders, Florida, Longest 2 1/4"
455. Large Lot Arrowheads, Indian Artifacts, Halde-man's Island, PA Ex: Enders
456. Miniature Hardstone Axe + Chisel, Great Condition, Axe-3 1/4", Chisel 4 5/8", Halifax PA Ex: Enders
457. SUPERB Belll Pestle With Hand Wear Narks and Bottom Wear Marks, 5 1/2" Tall, Halifax PA Ex: Enders
458. Lot of x3 Axes, x2 Full Groove, x1 3/4 Grooved, Halifax PA, Ex: Enders Collection, Longest 5 3/4"
459. Lot of Axes, Grooved Mauls, Notched Axes Hand Axe, Halifax PA, Ex: Titus Enders
460. x2 Trays Fossils, 100's Shark Teeth, Found at Blind Pass Beach, Sanibel Island, Florida 2003 Enders
461. Trays Fossils, 100's Shark Teeth, Found at Blind Pass Beach, Sanibel Island, Florida 2003 Enders
462. 2 Frames Shark Teeth, Found at Blind Pass Beach, Sanibel Island, Florida 2003 Enders
463. Tray Fossils, 100's Shark Teeth, Found at Blind Pass Beach, Sanibel Island, Florida 2003 Enders



437.

